

## Test Your IV Access Knowledge- Answers

### Quiz settings

Property	Setting
Passing score	70%
Total Number of Questions	7

### Questions

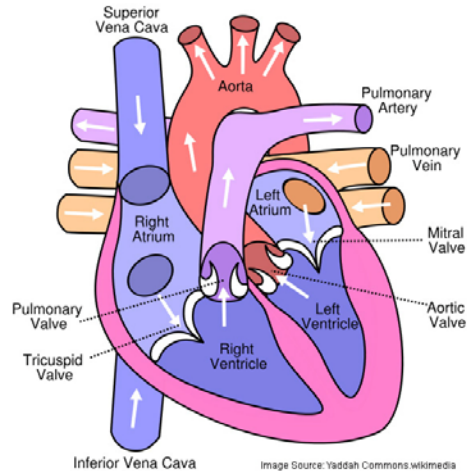
Multiple Choice, 15 points.

**1. According to the 2002 CDC Guidelines for Prevention of Intravascular Device Related Infections; routine Central Line dressing changes (transparent occlusive type) should be performed within what time interval?**

Correct	Choice
	Every other day
	Every 4 days
X	Every 7 days- for routine changes, otherwise the dressing is changed PRN whenever it becomes loose, damp or soiled.

Multiple Choice, 20 points.

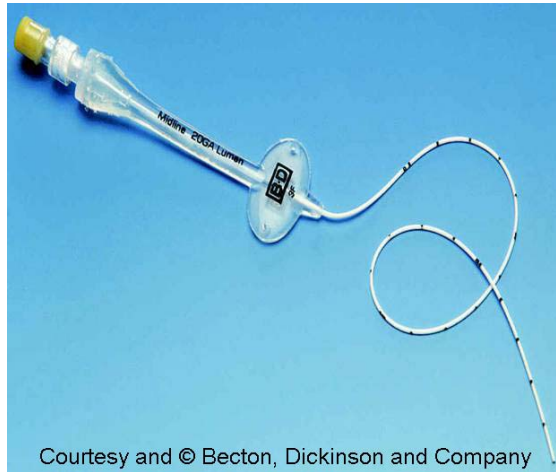
**2. The correct catheter tip placement for arm placed PICC Lines is:**



Correct	Choice
	The upper half of the superior vena cava
X	From the lower third of the superior vena cava to the caval atrial junction – research has shown this to be optimal with less complications. See INS Standards of Practice.
	The right atrium of the heart
	The inferior vena cave

True/False, 15 points.

**3. According to Infusion Nurses Standards of Practice, a midline catheter can remain indwelling for up to 4 weeks.**



Courtesy and © Becton, Dickinson and Company

Correct	Choice
X	True
	False

Multiple Choice, 15 points.

**4. According to the current Infusion Nurses Standards of Practice, a PICC Line catheter can remain indwelling for how long?**

Correct	Choice
	6 months
	1 year
X	Time period is undetermined- as of 2006 standards. Former standards stated 1 year.
	4 weeks

Multiple Response, 15 points.

**5. Select all of the medications from this list that are known to cause tissue injury and necrosis when administered through NON central IV catheters.**

Correct	Choice
	Penicillin
X	Dopamine- can cause extravasation
	Insulin
X	Phenergan- can cause extravasation

Multiple Choice, 10 points.

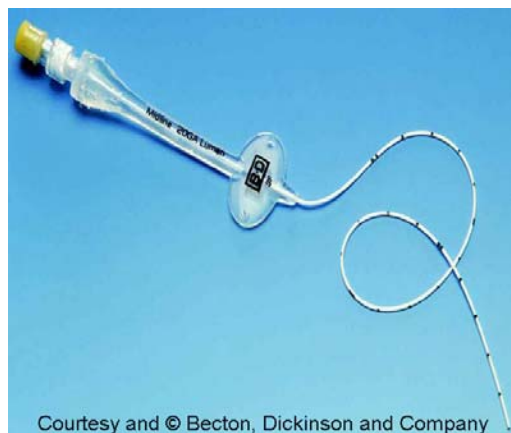
**6. This image is an example of the complication:**



Correct	Choice
	Infection
	Infiltration
X	Phlebitis- note red streak indicating inflammation along vein path.

True/False, 10 points.

**7. Medications that cause vein irritation should be infused through a midline catheter.**



Correct	Choice
	True
X	False- a midline catheter's tip lies within a peripheral vessel within the arm. The same guidelines used for medications infused through traditional short IV catheters applies to midline catheters.